



## Green Building/Senior Fair Exhibits

☐ Departments 1 - 20 are part of the Senior Fair.

Most categories are open to all ages; youth and adult.

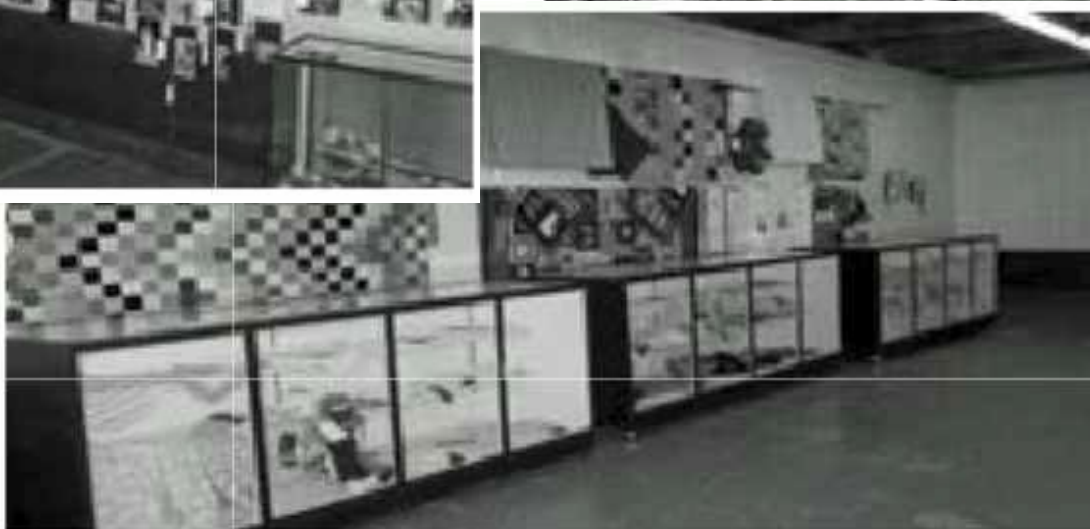
Participation in 4-H or FFA is not required.

Anyone may participate and enter in one or all of the various categories. To enter an item for exhibit and judging, a membership with the Lucas County Agricultural Society or an Exhibitor's Pass is required. Both passes allow for six admissions to the fair, FREE parking and unlimited entries.

A one-time \$3 fee is required for all youths to enter an unlimited number of items.

Show off your handi-work, collections, photographs, baked goods, antiques, canning skills or other talents by exhibiting in this year's fair.

You may just surprise yourself and come home with some ribbons and cash awards to show off to your family and friends!





## Green Building/Senior Fair Table of Contents

Department	Name	Page
1	Field and Speciality Crops Rules	41
1	Field & Specialty Crops Sections/Classes	42
2	Vegetables and Fruits Sections/Classes	44
3	Baked Goods Rules	46
3	Baked Goods Sections/Classes	47
3	Baked Goods Cake Decorating	48
3	Homemade Apple Pie Baking Contest	51
4	Homemade Candy Rules, Sections/Classes	52
5	Canned Goods Rules, Sections/Classes	53
5	Canned Goods Sections/Classes Cont.	53
6	Needle Crafts Rules	55
6	Needle Crafts Sections/Classes	56
7	Art Rules	57
7	Art Sections/Classes	58
8	Crafts & Hobbies Rules	59
8	Crafts & Hobbies Sections/Classes	60
8	Crafts & Hobbies Sections/Classes	61
9	Collections Rules	62
9	Collections Sections/Classes	63
10	Photography Rules	64
10	Photography Sections/Classes	65
11	Antiques Rules	66
11	Antiques Sections/Classes	67
12	Flowers Rules	68
12	Flowers Sections/Classes	69
12	Flowers Sections/Classes Cont.	70
-----	SENIOR ENTRY FORM	71
13	Freestanding Scarecrow	73
14	Seasonal Decorations	73
19	Woodworking Rules	74
19	Woodworking Sections/Classes	75
20	Homemade Beer & Wine Rules	76
20	Homemade Beer	77
20	Homemade Wine	78

## Department 1 & 2 Rules & Regulations



### Rules:

1. The Horticultural Department is located in the green building.
2. All entries must be grown by the exhibitor.
3. No more than two (2) entries per class, per person.
4. Due to the early fair date, Field & Specialty crops may be from the preceding year.
5. Due to the 6-day fair, please attempt to keep your horticultural exhibits as fresh looking as possible for the duration of the fair.
6. Exhibitors must put complete name on entry tag.
7. All grain will be shown in a clear, glass 1-quart jar, furnished by the exhibitor.

### Entry Deadline/Arrival Time:

All exhibits are to be brought into the green Arts and Crafts Building on Tuesday between Noon and 6:00 p.m. judging will take place Tuesday after building closes. Exhibits **must NOT be removed before Sunday at 7:00 p.m.** Pre-registration is highly encouraged to help speed up the check-in process.

### Guidelines for Horticultural Judging:

**Uniformity** – Specimens should be uniform in size, shape and color. An exhibit that includes average specimens and one exceptional specimen will not score as high as an exhibit of four average specimens.

**Freedom from Defect** – Specimens selected for exhibits should be free from defects, such as insect injury, disease injury, growth cracks, greening, mechanical injury and shriveling. **Maturity** – mature specimens are desirable, except when specified.

**Size** – Larger sized specimens generally rank higher than smaller sized specimens of the same quality.

**True to Variety Name** – Each specimen selected should be true to the name and characteristics of the variety being displayed.

**Cleanliness** – All specimens should be clean. Use a soft cloth or a soft brush for this purpose. Vegetables should not be washed unless necessary to remove dirt. Vegetables should not be waxed or polished.

**Presentation** – Exhibitors can add to the attractiveness of their exhibit by arranging the specimens neatly. Awards will be based upon how an exhibit compares to other exhibits within its class.

**Director in Charge**  
Susan Stram

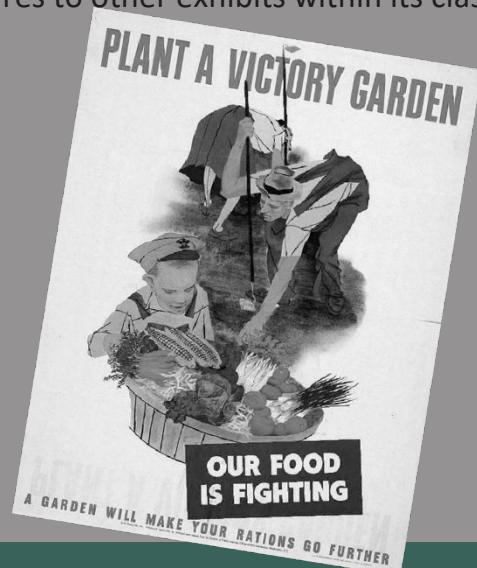
**Department Head**  
Susan Stram

**Entry and arrival deadline:** Tuesday: Noon – 6:00 pm

**Entry Fees:** Adult Exhibitor ticket or Membership ticket  
Youth: Onetime \$3.00, unlimited entries

### **Premiums:**

- 1st - \$5.00
- 2nd - \$3.00
- 3rd - Ribbon





## Department 1 Field and Specialty Crops

*For Rules & Regulations  
see Page 41*

### **Section 1:**

#### **Field Crops Class:**

##### **Field Grains**

1. Barley; Any recognized variety
2. Buckwheat: Any recognized variety
3. Soy Beans; Any recognized variety
4. Soy Beans; Tallest stalk
5. Soy Beans; Most pods on stalk
6. Oats; Any recognized variety
7. Rye; Any recognized variety

##### **Corn**

8. Corn; Any recognized variety
9. Corn; Ear corn – 3 ears
10. Corn; Largest ear
11. Corn; Freakish ear
12. Corn; Tallest stalk
13. Corn; Most ears on stalk

##### **Sweet Crops**

14. Sugar Beets; Largest (one)

##### **Honey**

15. Honey (1 lb) - Light in clear glass jar
16. Honey (1 lb) - Dark in clear glass jar
17. Honey (1 lb) - Comb in clear glass jar

##### **Sunflowers**

18. Sunflowers; Any recognized variety
19. Sunflowers; Tallest stalk
20. Sunflowers: Most Blooms

##### **Grasses**

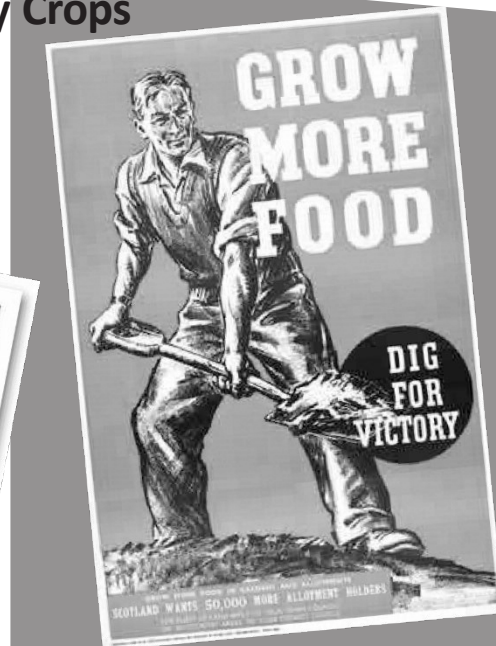
21. Grass; Bromergrass
22. Grass; Timothy
23. Grass; Ryegrass
24. Sorghum; Any recognized variety
25. Sorghum; Tallest stalk

##### **Field Seeds**

26. Field Seed; Clover
27. Field Seed; Alfalfa
28. Field Seed; Mixed

##### **Grain in Sheaf**

29. Grain in Sheaf; Barley
30. Grain in Sheaf; Oats
31. Grain in Sheaf; Rye
32. Grain in Sheaf; Sorghum
33. Grain in Sheaf; Wheat



##### **Baled Crops**

34. Baled Crops; Hay – 1 slice in clear plastic
35. Baled Crops; Straw – 1 slice in clear plastic

##### **Popcorn**

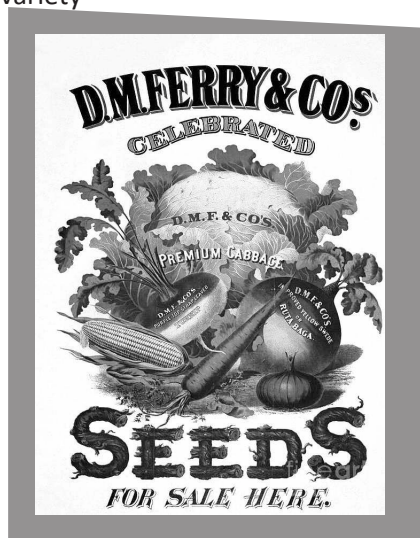
36. Popcorn; Yellow 3 ears
37. Popcorn; White 3 ears
38. Popcorn; Strawberry 3 ears
39. Popcorn; Calico 3 ears
40. Popcorn; Blue 3 ears
41. Popcorn; Any other 3 ears
42. Popcorn; Largest ear
43. Popcorn; Smallest ear
44. Popcorn; Freakish ear

##### **Ornamental Corn**

45. Ornamental Corn; Regular 3 ears
46. Ornamental Corn; Small 3 ears
47. Ornamental Corn; Mini 3 ears
48. Ornamental Corn; Largest ear
49. Ornamental Corn; Smallest ear
50. Ornamental Corn; Freakish ear
51. Any other

##### **Special Category - Creative Display**

52. Create a decorative basket display with fruits and/or vegetables. Basket size should be between a peck and bushel.





## Department 1 Field and Specialty Crops



### Section 2:

#### Horticultural Designs Class:

##### **Seed Mosaics: Adult**

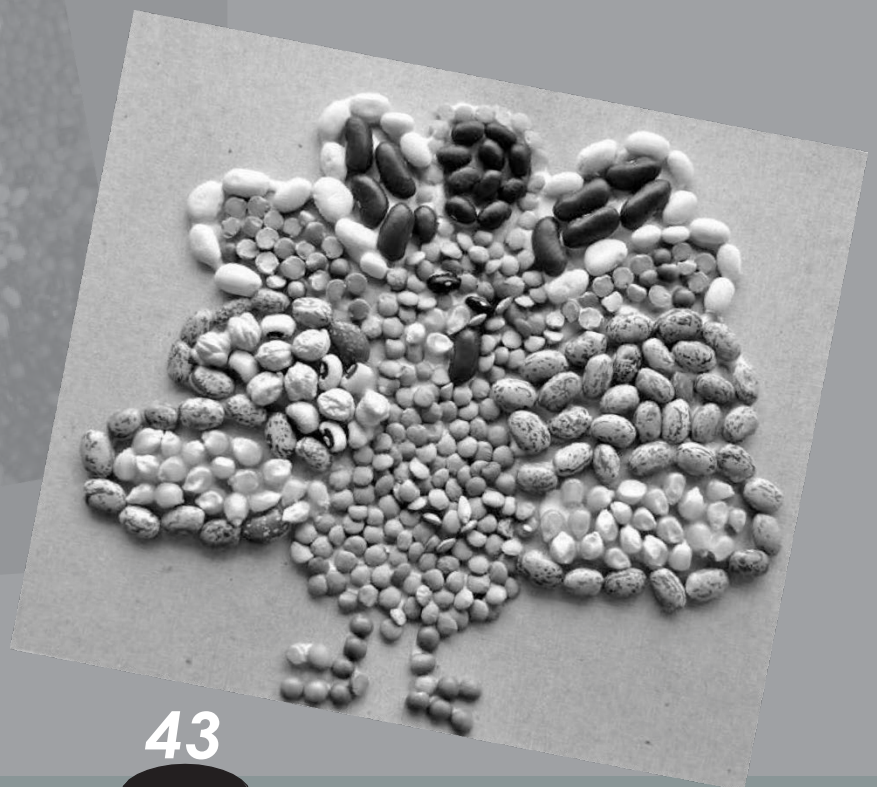
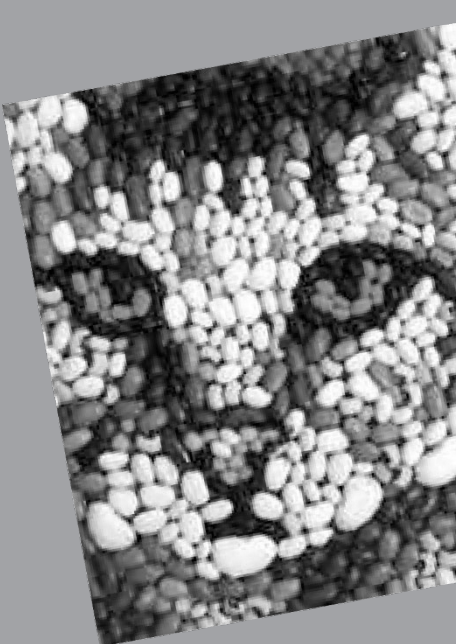
1. Pictures made with natural seed, no coloring kits.

##### **Seed Mosaics: Youth 13 to 17**

2. Picture made with natural seed, no coloring kits.

##### **Seed Mosaics: Youth 12 and under**

3. Pictures made with natural seed, no coloring kits.



## Department 2 Vegetables and Fruit

*All exhibits are to be brought into the green Arts and Crafts Building on Tuesday between Noon and 6:00 p.m. and must not be removed before Sunday at 7:00 p.m. Pre-registration is highly encouraged to help speed up the check-in process.*

### Section 1

**Bean Class: 6 to a plate**

1. All varieties

### Section 2

**Cabbage Class: 1 head**

1. All varieties

### Section 3

**Cucumbers Class: 3 to a plate**

1. All varieties

### Section 4

**Herbs Class: 3 stems to a container**

2. All varieties

### Section 5

**Potted Herbs Class: Special Feature**

1. All varieties

*For Rules & Regulations  
see Page 41*



### Section 6

**Lettuce Class: 1 head/3 leaves**

1. All varieties

### Section 7

**Onions Class: 3 to a plate**

2. All varieties

### Section 8

**Peppers Class: 3 to a plate**

3. All varieties

### Section 9

**Squash Class: 3 to a plate**

1. All varieties

### Section 10

**Tomatoes Class: 3 to a plate**

1. All varieties

9.53.9 *Acacia*



## Department 2 Vegetables and Fruit

*For Rules & Regulations  
see Page 41.*

### **Section 11**

#### **Peas Class:**

1. Any varieties

### **Section 12**

#### **Potatoes Class: 3 to a plate**

1. Any varieties

### **Section 13**

#### **Radishes Class: 3 to a plate**

1. Any varieties

### **Section 14**

#### **Sweet Corn Class: 3 to a plate**

1. Any varieties

### **Section 15**

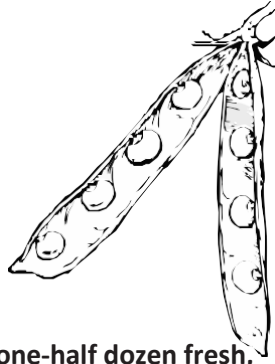
**Eggs Class:** Entry to consist of one-half dozen fresh, clean eggs, matched in size and color. Eggs must be in a carton (dozen-sized carton is approved for the 6 eggs).

1. Chicken; Small 1.5 – 1.75 oz per egg
2. Chicken; Medium 1.76 – 2.0 oz
3. Chicken; Large 2.1 – 2.5 oz
4. Chicken; Extra Large 2.6 oz or larger
5. Chicken; Jumbo 3 oz. or larger
6. Ducks; 3 or more any size and/or color

### **Section 16**

#### **Miscellaneous Class:**

1. Asparagus; 3 to a plate
2. Beets; 3 to a plate
3. Broccoli; bunch
4. Brussels Sprouts; 6 on a stalk
5. Carrots; 3 to a plate
6. Cauliflower; 1 head



### **Section 16 continued...**

#### **Miscellaneous Class:**

7. Celery; bunch
8. Collards; bunch
9. Eggplant; 1
10. Pickles; 3 to a plate
11. Rhubarb; 2 to a plate
12. Rutabaga; 2 to a plate
13. Salsify; 2 to a plate
14. Spinach; 1 bunch
15. Turnips; 3 to a plate
16. Freakish vegetable
17. Any other

### **Section 19**

#### **Potted Vegetable Planters Class:**

Realizing the time frame of the Fair, the following vegetables will be judged while still growing in a planter:

1. Cucumbers
2. Tomatoes
3. Peppers
4. Beans; any variety
5. Egg Plant
6. Most unique planter w/vegetable
7. Any other

### **Section 20 Melons Class:**

1. Any varieties

### **Section 21 Garlic Class:**

1. Any varieties

## Department 3 Baked Goods

### Rules:

1. All cakes must be placed on cardboard; 1" larger than cake.
2. All cookies must be placed on sturdy, white paper plates.
3. Pies may be brought in glass or metal pie plates. Please mark your plates clearly with your name!
4. The Lucas County Agricultural Society is not responsible for breakage or loss of any dishes, utensils or exhibit brought to the fairgrounds, but will try their best to ensure the safety of all exhibits.
5. The Directors in charge reserve the right to reject all or part of an entry, remainder of all exhibits will become property of Lucas County Fair.
6. No commercial mixes, please.
7. No finished product may contain raw eggs. All baked goods using eggs must be cooked.
8. The judges' decisions are final.
9. A portion of every entry will be kept for the exhibit.
10. "Best of Show" will be given in Cookies, Cakes, Breads and Pies.

**Entry Deadline/Arrival Time:** All exhibits are to be brought into the green Arts and Crafts Building on Monday between Noon and 6:00 p.m. and must NOT be removed on Sunday at 7:00 p.m. Pre-registration is highly encouraged to help speed up the check-in process.

### Director in Charge

Susan Stram

### Department Head

Susan Stram

### Entry Fees:

Adult: Exhibitor ticket or Membership ticket

Youth: A one-time \$3 fee for unlimited entries in all departments.

### Premiums: Adults

1st - \$5.00

2nd - \$3.00

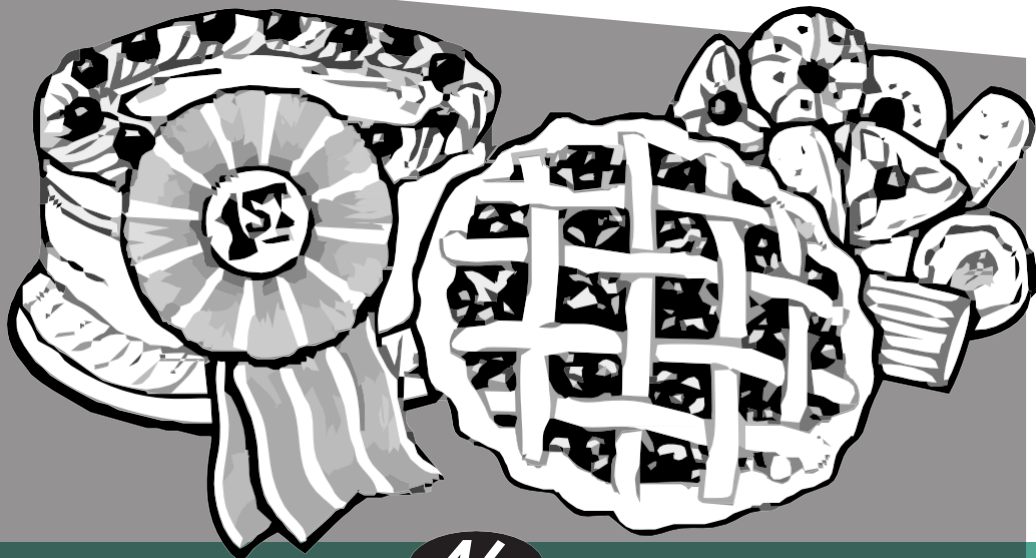
3rd - Ribbon

### Premiums: Youth

1st - \$3.00

2nd - \$1.00

3rd - Ribbon





## Department 3 Baked Goods

### Section 1

#### **Cookies Class: 6 to a plate**

Any varieties

### Section 2

#### **Cakes Class:**

1. Any varieties

### Section 3

#### **Quick Breads Class:**

1. Any varieties

### Section 4

#### **Muffins Class: 6 to a plate**

1. Any varieties

### Section 5

#### **Yeast Breads Class:**

1. Any varieties



### Section 6

#### **Pies Class:**

1. Any varieties

### Section 7

#### **Cupcake Class: 6 to a plate**

1. Any varieties

### Section 8

#### **Decorated Party Cupcakes Class: 3 to a plate**

1. Adult entries

2. Youth entries; 17 and under

### Section 9

#### **Youth Cookie Decorating Class: 3 to a plate**

1. Youth; ages 12-17

2. Youth; ages 11 and under

### Section 10

#### **Best Ever Apple Crisp Class:**

1. Adult; any variety

2. Youth; 17 and under; any variety

### Section 11

#### **Iced Cookies Class: 6 to a plate**

1. Adult; Iced chocolate

2. Adult; Iced white

3. Adult; Iced Fruity

4. Adult; Iced any other

5. youth; Iced chocolate 17 and under

6. Youth; Iced white 17 and under

7. Youth; Iced fruity 17 and under

8. Youth; Iced and other 17 and under

### Section 12

#### **Pastries Class: 4 to a plate**

1. Any varieties

**Department 3  
Baked Goods**

**Section 13 - Cake Decorating**

*Entries will be judged on creativity and presentation  
Dummy cakes may be used for all classes*

**1st - \$15.00**

**2nd - \$10.00**

**Professional Class:**

1. Round Layer 9" minimum
2. Sheet cake ½ sheet only
3. Wedding cake
4. Doll cake

**Amateur Class:**

5. Round Layer 9" minimum
6. Sheet cake ½ sheet only
7. Wedding cake
8. Doll cake

**Youth Class:**

9. Doll cake
10. 14 sheet or 9x13 cake





# Homemade Apple Pie Challenge

***Enter your favorite homemade apple pie  
Pies will be judged on appearance and taste***

**Prizes:**

1st	\$50
2nd	\$25
3rd	\$10



Entry date 1:00 pm Saturday  
Green Arts and Crafts Building  
**Judging:** 2:00 pm

No entry fees or forms are required  
Pie plates will **not** be returned

## *Pie & Ice Cream Social*

*Individual pieces of pie and ice cream  
will be available for a donation.*



## Department 4 Homemade Candy

**Entry Deadline/Arrival Time:** All exhibits are to be brought into the green Arts and Crafts Building on Monday between Noon and 6:00 p.m. and must be NOT removed on Sunday at 7:00 p.m.  
*Pre-registration is highly encouraged to help speed up the check-in process.*

**Director in Charge**  
Susan Stram

**Department Head**  
Susan Stram

**Entry Fees:**

Adult: Exhibitor ticket or Membership ticket

Youth: A one-time \$3 fee for unlimited entries in all departments.

**Premiums: Adults**

1st - \$5.00

2nd - \$3.00

3rd - Ribbon

**Premiums: Youth**

1st - \$3.00

2nd - \$1.00

3rd - Ribbon

**Section 1 Fudge Class:**

1. Any varieties

**Section 2 Peanut Brittle Class:**

1. Any varieties

**Section 3 Chocolate Covered Candies Class:**

1. Any varieties

**Section 4 Homemade Decorative Lollipops Class:**

1. Homemade decorative lollipops

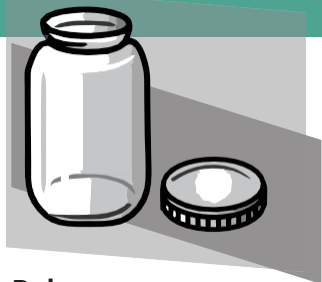
**Section 7 Covered Apples Class:**  
**(Judged by appearance only)**

1. Any varieties

**Section 8 Other Homemade Candies Class:**

1. Any varieties





## Department 5 Canned Goods



### **Rules:**

**1. Only 2 entries per person per class. Bring 2 Jars - One for Show & One for Taste.**

2. Container for show must be a pint or quart. The one for taste be can any size.  
The tasting jar will be available for pick up after judging.

3. Product must have been canned within the past 12 months.

4. Product must have been canned by exhibitor.

5. All lids must be sealed and have a ring.

6. Canned goods will be judged on appearance and taste.

*Entry Deadline/Arrival Time: All exhibits are to be brought into the green Arts and Crafts Building on Monday between Noon and 6:00 p.m. and must NOT be removed BEFORE Sunday at 7:00 p.m. Any canned goods not picked will be donated. Pre-registration is highly encouraged to help speed up the check-in process.*

### **Director in Charge**

Stram

### **Premiums**

1st - \$5.00

2nd - \$3.00

3rd - Ribbon

### **Section 1 Butters Class:**

1. Any varieties

### **Section 2 Preserves Class:**

1. Any varieties

### **Section 3 Jams Class:**

1. Any varieties

2.

### **Section 4 Jellies Class:**

1. Any varieties

### **Section 5 Canned Fruit Class:**

Any varieties

# Department 5 Canned Goods

*Rules & Regulation on Page 53*

## **Section 6**

### **Canned Vegetables Class:**

1. Any varieties

## **Section 7**

### **Canned Meat Class:**

1. Any varieties

## **Section 8**

### **Pickles Class:**

1. Any varieties

## **Section 9**

### **Chutney Class:**

1. Any varieties

## **Section 10**

### **Curds Class:**

1. Any varieties

## **Section 11**

### **Miscellaneous Sauces and Catsup Class:**

1. Any varieties

## Department 6 Needle Crafts

### Rules:

1. All entries must be handmade, clean and in good repair to be considered for judging.
2. The Director in charge has the right to move any exhibit and the right to reject all or part of an entry.
3. If only one entry in a class, the judge shall decide premium and ribbon awarded.
4. Articles may only be exhibited two years in succession.
5. Judge's decisions are final.
6. The Lucas County Agricultural Society, the Director in charge and Department Chairperson will not be liable for theft or damage, but will take every reasonable precaution to ensure the safety of all exhibits to the best of their ability.
7. There is no provision made for insurance. Insurance is the responsibility of the exhibitor.

### Entry Deadline/Arrival Time:

All exhibits are to be brought into the green Arts and Crafts Building on Saturday between 10:00 a.m. and 4:00 p.m. and must not be removed before Sunday, at 7:00 p.m. Pre-registration is highly encouraged to help speed up the check-in process.

Best of Show may be awarded to those entries of exceptional merit.

### Director in Charge

Susan Stram

### Department Head

Susan Stram

### Entry Fees

Adult Exhibitors - Exhibitor ticket or Membership pass

Youth Exhibitors - A one-time \$3 fee for unlimited entries in all departments.

### Premiums: Adults

1st - \$5.00

2nd - \$3.00

3rd - Ribbon

### Premiums: Youth

1st - \$3.00

2nd - \$1.00

3rd - Ribbon





## Department 6 Needle Crafts

Rules & Regulation on Page 55



### Section 1

#### Quilting Class:

1. Hand appliquéd quilt
2. Machine appliquéd quilt
3. Combination of pieced and quilted by hand or machine
4. Machine appliquéd baby quilt
5. Baby quilt; pieced
6. Hand quilted bed quilt
7. Machine quilted bed quilt
8. Hand quilted wall hanging
9. Machine quilted wall hanging
10. Quilted Christmas item
11. Quilted table runner
12. Scrap quilt
13. Crazy quilt
14. Appliquéd tablecloth/cover
15. Pillows
16. Any other

### Section 2

#### Afghans, Knit or Crochet Class:

1. Square
2. Rectangle
3. Round
4. Baby
5. Any other

### Section 3 –

#### Crocheted Class

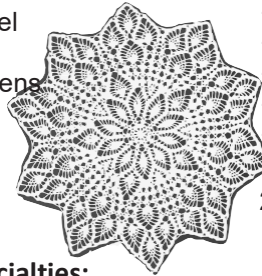
1. Doily
2. Pot holders
3. Pillow
4. Table décor (Placemats or table runners)
5. Hat
6. Scarf / poncho / /shawl / other wrap
7. Purse / tote
8. Holiday decorations
9. Amigurumi / toy
10. Ladies' apparel
11. Men's apparel
12. Babies' apparel
13. Slippers
14. Gloves or mittens
15. Socks
16. Dish cloth
17. Any other



### Section 4

#### Hand Knitted Class:

1. Doily
2. Pot holders
3. Pillow
4. Table décor (Placemats or table runners)
5. Hat
6. Scarf / poncho / /shawl / other wrap
7. Purse / tote
8. Holiday decorations
9. Amigurumi / toy
10. Ladies' apparel
11. Men's apparel
12. Babies' apparel
13. Slippers
14. Gloves or mittens
15. Socks
16. Dish cloth
17. Any other



### Section 5

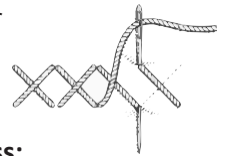
#### Needlework Specialties:

1. Stumpwork item
2. Canvas / needlepoint including silk gauze item
3. Hardanger item
4. Pulled thread item
5. Counted thread – even weave fabric item
6. Any beaded item – i.e. peyote stitch, brick stitch
7. Any beaded item on fabric or perforated paper
8. Crewel item
9. Tapestry item
10. Punch needle embroidery
11. Postcard/ Greeting card – any technique
12. Any needle felted item
13. Any felt item

### Section 6

#### Hand Stitching, Decorative Items Class:

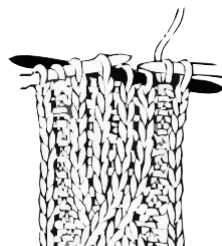
1. Pillow Cases: Set of two
2. Apron
3. Bedspread
4. Dresser scarf
5. Tablecloth/cover
6. Handkerchief
7. Bib
8. Fabric flowers
9. Doll with clothes
10. Rug
11. Framed picture
12. Framed sampler
13. Pillow
14. Wall hanging
15. Any other
16. Towel
17. Blanket
18. Purse / tote
19. Tablecloth or Cover
20. Any other



### Section 7

#### Machine Sewing Class:

1. Infant Top & Bottom
2. Infant Dress
3. Infant PJs Top & Bottom
4. Child's Top & Bottom
5. Child's Dress
6. Child's PJs Top & Bottom
7. Adult Robe or Night Gown
8. Adult PJs Top & Bottom
9. Adult Dress; Casual
10. Adult Dress; Formal
11. Adult Shorts
12. Adult Top
13. Men's Slacks
14. Wedding Dress; Bridesmaid
15. Purse / tote
16. Any other





## Department 7 Art

### Rules:

1. No more than two entries per class.
2. Open to all artists.
3. Entries may be any size up to 30" x 40". Hangers must be able to hang on one hook only. Hangers that fall off an exhibit at any time during the fair may disqualify the entry.
4. Any exhibit may be framed or matted. However, the framing and matting WILL NOT be considered when judging.
5. Nudes will not be accepted.
6. Entries must have their name, address and phone number on the back of all entries.
7. Entries such as sculptures, blown glass and jewelry should have this information listed on a 3"x 5" index card for each entry being submitted.
8. Articles may only be exhibited two years in succession.
9. The judge(s) decision shall be final.
10. When there is only one entry in a class, the judge will decide ribbon and premium awarded.
11. Exhibitor must supply any background materials needed to display exhibit.
12. Director in Charge has the right to move any exhibit and the right to reject all or any part of an entry.
13. Exhibitors should have and keep a list of all entries.
14. The Lucas County Agricultural Society, the Department Chairman or the Directors in Charge will not be liable for theft or damage, but will take every reasonable precaution to ensure the safety of all exhibits to the best of their ability.
15. There is no provision made for insurance. Insurance is the responsibility of the exhibitor.

### **Entry Deadline/Arrival Time:**

All exhibits are to be brought into the green Arts and Crafts Building on Saturday between 10:00 a.m. and 4:00 p.m. and must not be removed before Sunday at 7:00 p.m. Pre-registration is highly encouraged to help speed up the check-in process.

### **Director in Charge**

Susan Stram

### **Department Head**

Susan Stram

### **Entry Fees**

Adult Exhibitors - Exhibitor ticket or Membership pass

Youth Exhibitors - A one-time \$3 fee for unlimited entries in all departments.

### **Premiums: Adults**

1st - \$5.00

2nd - \$3.00

3rd - Ribbon

### **Premiums: Youth**

1st - \$3.00

2nd - \$1.00

3rd - Ribbon



## Department 7 Art

**Amateur** – Anyone with limited experience.

**Novice Professional** – Anyone painting over two years but not considered a paid professional or teacher.

**Paid Professional/Teacher** – An adult who teaches decorative painting or sells their art on a regular basis earning over \$1,000 or doing two or more art and/or craft shows per year.

### Section 1

#### **Amateur Art; Adult Class:**

1. Oil, acrylic and lacquer
2. Mixed media
3. Watercolor, casein, tempera
4. Drawings; pencil, ink, charcoal, pastels
5. Clay; of original design
6. Sculpture; any media
7. Blown glass
8. Any other

### Section 2

#### **Novice Professional; Adult Class:**

1. Oil, acrylic and lacquer
2. Mixed media
3. Watercolor, casein, tempera
4. Drawings; pencil, ink, charcoal, pastels
5. Clay; of original design
6. Sculpture; any media
7. Blown glass
8. Any other

### Section 3

#### **Paid Professional/Teacher Class:**

1. Oil, acrylic and lacquer
2. Mixed media
3. Watercolor, casein, tempera
4. Drawings; pencil, ink, charcoal, pastels
5. Clay; of original design
6. Sculpture; any media
7. Blown glass
8. Any other

### Section 4

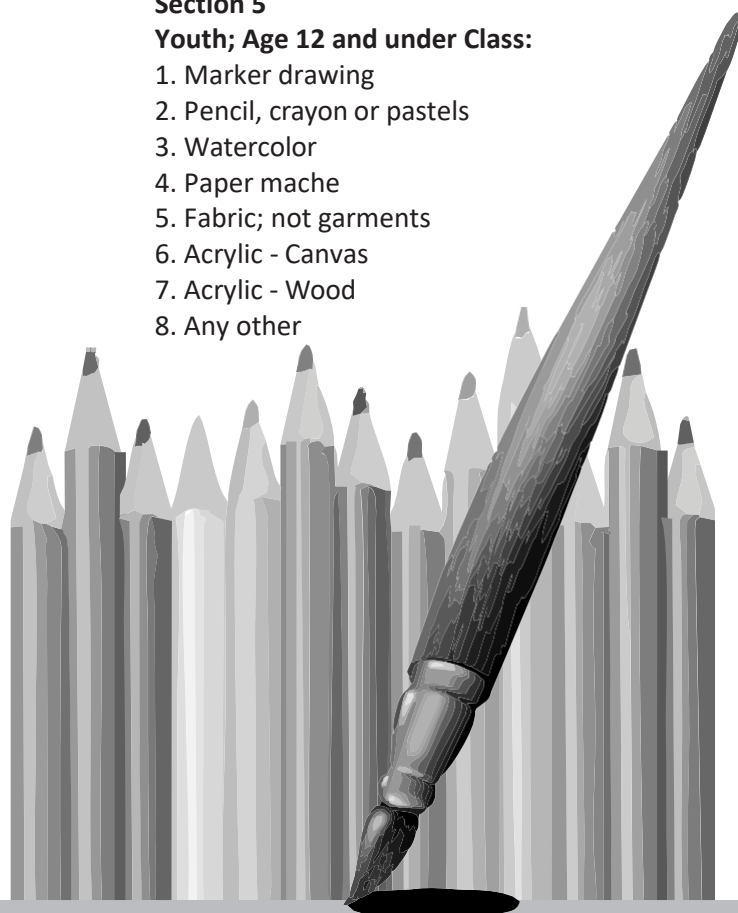
#### **Youth Art; Age 13-17 Class:**

1. Marker drawing
2. Pencil, crayon or pastels
3. Watercolor
4. Paper Mache
5. Fabric; not garments
6. Sculpture; any media
7. Any other

### Section 5

#### **Youth; Age 12 and under Class:**

1. Marker drawing
2. Pencil, crayon or pastels
3. Watercolor
4. Paper mache
5. Fabric; not garments
6. Acrylic - Canvas
7. Acrylic - Wood
8. Any other



If you have an Arts or Crafts item that you'd like to enter but cannot locate a category, please bring it during the check-in process and we will gladly find or make a category for it. We want to display your items!

## Department 8 Crafts/Hobbies

### Rules:

1. No more than two entries per class.
2. Exhibits must fit into a 12" x 18" space or less.
3. Open to all artists.
4. Nudes or inappropriate entries will not be accepted.
5. Entries must have their name, address and phone number on the back of all entries.
6. If name cannot fit on exhibit, place this information on a 3"x5" index card for each entry being submitted.
7. Articles may only be exhibited two years in succession.
8. The judge(s) decision shall be final.
9. When there is only one entry in a class, the judge will decide ribbon and premium awarded.
10. Exhibitor must supply any background materials needed to display exhibit.
11. Director in Charge has the right to move any exhibit and the right to reject all or any part of an entry.
12. Exhibitors should have and keep a list of all entries.
13. The Lucas County Agricultural Society, the Department Chairman or the Directors in Charge will not be liable for theft or damage, but will take every reasonable precaution to ensure the safety of all exhibits to the best of their ability.
14. There is no provision made for insurance. Insurance is the responsibility of the exhibitor.

### **Entry Deadline/Arrival Time:**

All exhibits are to be brought into the green Arts and Crafts Building on Saturday between 10:00 a.m. and 4:00 p.m. and must not be removed before Sunday at 7:00 p.m. Pre-registration is highly encouraged to help speed up the check-in process.

### **Director in Charge**

Susan Stram

### **Department Head**

Susan Stram

### **Entry Fees**

Adult Exhibitors - Exhibitor ticket or Membership pass

Youth Exhibitors - A one-time \$3 fee for unlimited entries in all departments.

### **Premiums: Adults**

1st - \$5.00

2nd - \$3.00

3rd - Ribbon

### **Premiums: Youth**

1st - \$3.00

2nd - \$1.00

3rd - Ribbon

Best of Show may be awarded to those entries of exceptional merit.



## Department 8 Crafts/Hobbies

### Section 1

#### Crafts Class:

##### All ages.

1. Basket weaving
2. Candles
3. Collage; decoupage
4. Origami
5. Holiday door decoration
6. Paper flowers
7. Latch hook
8. Leather work; original design
9. 10. Stained glass
11. Handmade soap
12. Any other



### Section 2

#### Button Picture Class:

Take your favorite buttons and make a neat button picture. Picture can be of anything you want and can use as many buttons as you like. Attach buttons with glue, string or anything! Buttons must be secured to picture backing.

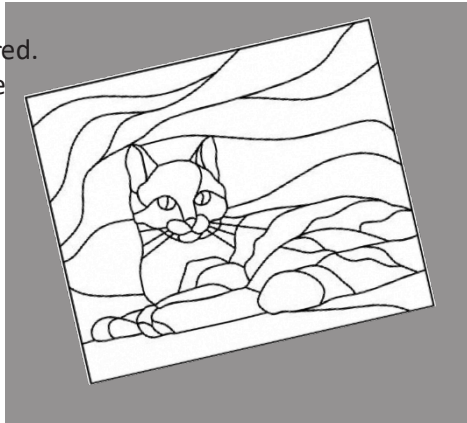
1. Button picture; Youth 14 - 17
2. Button picture; Youth 8 - 13
3. Button picture; Youth 7 and under

### Section 3

#### Ceramics Class:

All ceramics must be fired.

1. Air brush under glaze
2. Clay lifting
3. Dry brush stain
4. Glaze
5. Holiday decorations
6. Stains
7. Translucent stains
8. Under glaze
9. Any other



### Section 4

#### Rock Decorating Class:

Decorate your favorite rock using any material. Be creative and use your imagination!

1. Youth; ages 14 - 17
2. Youth; ages 8 - 13
3. Youth; ages 7 and under

### Section 5

#### Models Class:

Using a store purchased kit, or using handmade materials, show your skills and artistic ingenuity when you display your hand-crafted model. Models may be automobiles, rockets, buildings, aircrafts, boats, landscapes, etc.

1. Adult; model from a kit
2. Adult; model from scratch/handmade
3. Youth; 17 and under; model from a kit
4. Youth; 17 and under; model from scratch

### Section 6

#### Handmade Greeting Card Class:

Using any variety of materials, create a handmade greeting card for any occasion. Cards may include the use of paper cut-outs, pictures, fabric, glitter, glue, etc. Entries will be judged on neatness, creativity and originality.

1. Adult; 18 and over
2. Youth; 12 - 17
3. Junior Youth; 11 and under

### Section 7

#### Jewelry All ages Class:

1. Any varieties



### Section 8

#### Metal Crafting; All ages Class:

1. Any small item; not jewelry
2. Any large item; not jewelry





## Department 8 Crafts/Hobbies

### Section 9

#### Scrap Booking Class:

Take your favorite photos and materials and incorporate them into a work of art within a scrapbook. Entries will be judged on neatness, creativity and originality.

1. Adult; family/people; single page
2. Adult; scenery/landscapes; single page
3. Youth; 17 and under; family/people; single page
4. Youth; 17 and under; scenery/landscapes; single page
5. Entire Scrapbook; Scrapbook will be judged on cover, content, originality and organization.



## Department 9 Collections

### Rules:

1. No more than two entries per class.
2. Exhibits must fit into a 12" x 18" space or less.
3. Entries must have their name, address and phone number on the back of all entries.
4. If name cannot fit on exhibit, place this information on a 3" x 5" index card for each entry being submitted.
5. Articles may only be exhibited two years in succession.
6. The judge(s) decision shall be final.
7. When there is only one entry in a class, the judge will decide ribbon and premium awarded.
8. Exhibitor must supply any background materials needed to display exhibit.
9. Director in Charge has the right to move any exhibit and the right to reject all or any part of an entry.
10. Exhibitors should have and keep a list of all entries.
11. The Lucas County Agricultural Society, the Department Chairman or the Directors in Charge will not be liable for theft or damage, but will take every reasonable precaution to ensure the safety of all exhibits to the best of their ability.
12. There is no provision made for insurance. Insurance is the responsibility of the exhibitor.

### Entry Deadline/Arrival Time:

All exhibits are to be brought into the green Arts and Crafts Building on Saturday between 10:00 a.m. and 4:00 p.m. and must not be removed before Sunday at 7:00 p.m. Pre-registration is highly encouraged to help speed up the check-in process.

### Director in Charge

Susan Stram

### Department Head

Susan Stram

### Entry Fees

Adult Exhibitors - Exhibitor ticket or Membership pass

Youth Exhibitors - A one-time \$3 fee for unlimited entries in all departments.

### Premiums: Adults

1st - \$5.00

2nd - \$3.00

3rd - Ribbon

### Premiums: Youth

1st - \$3.00

2nd - \$1.00

3rd - Ribbon

***Best of Show may be awarded to those entries of exceptional merit.***



# Department 9 Collections

## Section 1

### Adult Collections Class:

must contain at least three items

1. Animals; not Beanie Babies
2. Dolls and/or action figures
3. Disney
4. Ephemera; postcards, vintage advertising, card decks, stamps, comics, sports cards, etc.
5. Glass; bottles, vases, paperweights
6. China; teapots, cup/saucers, figurines
7. Military/Political
8. Vintage Tobacco, beer cans, beer steins, wine, liquor bottles
9. Costume jewelry, clocks, watches
10. Tins
11. Vintage kitchen; molds, S&P shakers, gadgets
12. Fishing lures
13. Nature
14. Christmas
15. Halloween
16. All American; red, white, blue
17. Any other holiday not listed
18. Any other



## Section 2

### Youth Collections (13-17) Class:

must contain at least three items

1. Animals; not Beanie Babies
2. Dolls and/or action figures
3. Disney
4. Movie theme
5. Cars, trucks, planes, trains
6. T.V. cartoon characters
7. Travel souvenirs
8. Beanie Babies
9. Nature
10. Holiday
11. Ephemera – stamps, baseball cards, comics
12. Any other



## Section 3

### Junior Youth Collections

#### (12 and under) Class:

must contain at least three items

1. Animals; not Beanie Babies
2. Dolls and/or action figures
3. Disney
4. Cars, trucks, planes, trains
5. T.V. cartoon characters
6. Nature
7. Any other



## Section 4

### Collection in a Basket Class:

A collection of the following themes displayed in a basket. The basket must have a handle but can be made of any material (twig, wicker, metal.) You may decorate the basket. An explanation card **MUST** be included with the basket that explains how you started the collection and any other information that you would like the judges to know. Entries will be judged on collection aesthetics and explanation card.

1. Adult; sport theme, sport teams(s)
2. Youth (13-17); sport theme, sport teams(s)
3. Junior Youth (12 and under); sport theme, sport team(s)
4. Adult; animals (not Beanie Babies)
5. Youth (13-17); animals (not Beanie Babies)
6. Junior Youth (12 and under); animals (not Beanie Babies)

## Section 5

### Lego's Class:

no more than three entries per class

1. Youth (13-17); Structures (forts, houses, etc)
2. Youth (13-17); Figures (spacemen, robots, etc)
3. Youth (13-17); Vehicles
4. Youth (12-under); Structures
5. Youth (12-under); Figures
6. Youth (12-under); Vehicles



## Department 10 Photography

### Rules:

1. Three entries per class are permitted, per person.
2. Youth entry fee is a one-time \$3 fee. This fee will allow the youth to enter unlimited entries for all departments. The fee does not allow entry into the fair.
3. Only amateur photography will be accepted.
4. Photographs may either be from film or digital methods.
5. No photograph may be any larger than 8½" x 11".
6. All photographs must have been taken within the last four years and any entry previously submitted in prior years will not be accepted.
7. All photographs must be taken by the exhibitor. Submitting other photographers' work will not be accepted.
8. No nudes or controversial subjects will be accepted. The Director in Charge has the final say in regards to appropriate content for submission for a county fair.
9. Exhibitors must have their name, address and phone number on the back of every entry.
10. No framing or matting will be accepted with any photograph (Except where specifically noted).
11. Fair will provide protective, plastic sleeves to display each photograph.
12. Photographs may NOT be altered or edited by using any photo enhancement programs (Except where specifically noted).

### Entry Deadline/Arrival Time:

All exhibits are to be brought into the green Arts and Crafts Building on Saturday between 10:00 a.m. and 4:00 p.m. and must be not removed before Sunday at 7:00 p.m. Pre-registration is highly encouraged to help speed up the check-in process.

### Director in Charge

Susan Stram

### Department Head

Susan Stram

### Entry Fees

Adult Exhibitors; Exhibitor ticket or membership pass

Youth Exhibitors; A one-time \$3 fee for unlimited entries in all departments.

### Premiums: Adults

1st - \$5.00

2nd - \$3.00

3rd - Ribbon

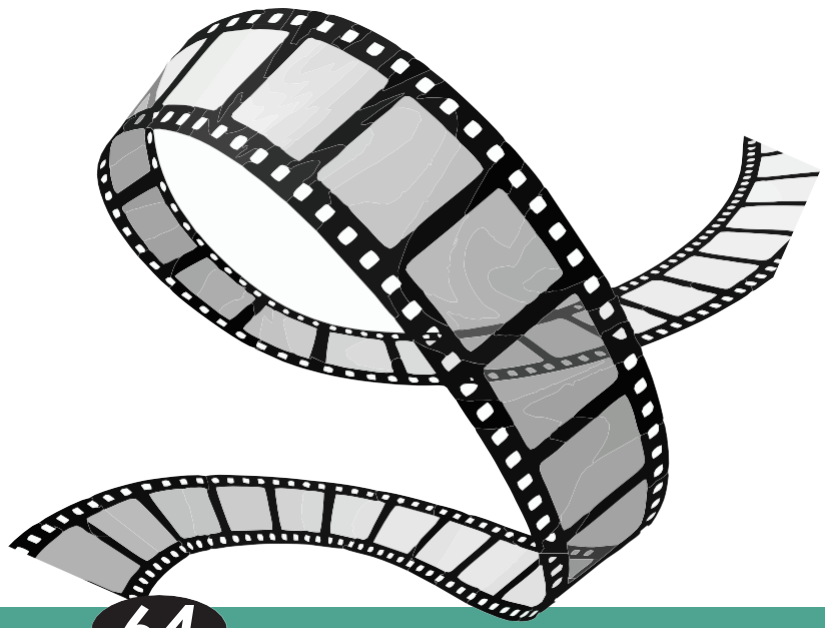
### Premiums: Youth

1st - \$3.00

2nd - \$1.00

3rd - Ribbon

One overall Best of Show for the  
Photography Department will be awarded



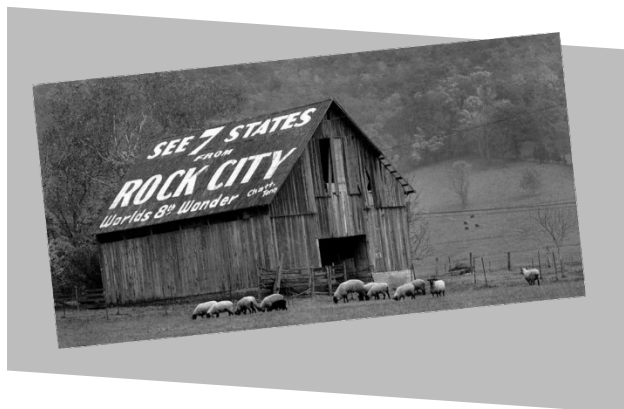


## Department 10 Photography

### Section 1

**Adult: (18 and older) Color or Black and White Class:**

1. Any varieties



### Section 2

**Youth (13-17) Color or Black and White Class:**

1. Any varieties



### Section 3

**Junior Youth (12 and under) Color or Black/White Class:**

1. Any varieties





## Department 11 Antiques

### Rules:

1. No more than two entries per class.
2. Exhibit must be at least 50 years old or later.
3. For the interest of the public, please write historic and pertinent information on a card to display with the exhibit.
4. Small exhibits must fit within a 12"x18" space.
5. Articles may only be exhibited two years in succession.
6. The judge(s) decision shall be final.
7. When there is only one entry in a class, the judge will decide ribbon and premium awarded.
8. Director in Charge has the right to move any exhibit and the right to reject all or any part of an entry.
9. Exhibitors should have and keep a list of all entries.
10. The Lucas County Agricultural Society, the Department Chairman or the Directors in Charge will not be liable for theft or damage, but will take every reasonable precaution to ensure the safety of all exhibits to the best of their ability.
11. There is no provision made for insurance. Insurance is the responsibility of the exhibitor.

### Entry Deadline/Arrival Time:

All exhibits are to be brought into the green Arts and Crafts Building on Saturday between 10:00 a.m. and 4:00 p.m. and must not be removed before Sunday at 7:00 p.m. Pre-registration is highly encouraged to help speed up the check-in process.

### Director in Charge

Susan Stram

### Department Head

Susan Stram

### Entry Fees

Adult Exhibitors - Exhibitor ticket or Membership pass

Youth Exhibitors - A one-time \$3 fee for unlimited entries in all departments.

### Premiums: Adults

1st - \$5.00

2nd - \$3.00

3rd - Ribbon

### Premiums: Youth

1st - \$3.00

2nd - \$1.00

3rd - Ribbon

Best of Show may be awarded to those entries of exceptional merit.



## Department 11 Antiques

### Section 1

#### Small Antiques Class:

1. Depression
2. Sets
3. Jewelry & Watches
4. Glass
5. Misc.



### Section 2

#### Large Antiques Class:

1. Furniture
2. Misc.

## Department 12 Flowers

### Rules:

1. Adult exhibitors must purchase an exhibitor's pass or a membership pass in order to entry exhibits.
2. Entry is by pre-registration. In all sections where class is determined by size and color, the exhibitor must list the specific classes they will be entering. Bring list of entries and number of entries. Entry committee members will complete exhibit tags on the day of judging.
3. Please read the list carefully. If not sure where to place your entry, please ask any committee member for assistance.
4. Flowers must be exhibited in clear glass containers of adequate size to prevent tipping. Foliage submerged in water should be removed. Containers must be proved by exhibitor.
5. Where there is only one entry in a class, the judge shall decide if a ribbon/money shall be awarded.
6. Director in charge reserves the right to reject all or part of an entry.
7. The Fair Board does not guarantee the safety of any article left by the exhibitor, but will take every reasonable precaution to ensure the safety of all exhibits.
8. Each exhibitor should make a list of all entered exhibits. This list will assist when picking up items on Sunday.
9. Due to the seven day length of the fair, the Fair Board appreciates each exhibitor cooperating and keeping their flowers as fresh looking as possible for public viewing.
10. Entries must be grown by the exhibitor unless noted elsewhere.
11. All specimens must be labeled as to variety on front of entry tag.
12. All exhibits must be disbudded unless noted elsewhere.
13. All foliage must be in place as frown, unless noted elsewhere.
14. If hardening solution is desired, it must be furnished by exhibitor.
15. Each exhibitor must list each entry on a separate line on entry sheet.



### Guidelines for judging:

1. **Uniformity;** All specimens should be uniform in size, shape and color. An exhibit that includes four average specimens and one exceptional specimen will not be score as high as an exhibit of five average specimens.
2. **Freedom from defects;** Specimens selected for exhibit should be free from defects such as insect injury, disease injury, growth cracks, yellowing and wilting.
3. **Maturity;** All flowers should be at the best stage for immediate displaying when they are exhibited. Under-mature or over-mature specimens are not desired.
4. **Size;** Average sized specimens rank higher than extremely large or extremely small specimens.
5. **True to Variety Name;** Each specimen should be true to the name and characteristics of the variety being displayed.
6. **Cleanliness;** All specimens should be clean.
7. **Arrangement of Flowers;** Exhibitors can add to the attractiveness of their exhibit by arranging the specimens neatly in containers.
8. Best of Show awarded in Potted Plants, Annuals, Perennials, Hanging Baskets and Specialty Pot.
9. Judges Decisions Are Final.

### Entry Deadline/Arrival Time:

Most exhibits are to be brought into the Green Arts and Crafts Building on TUESDAY between Noon and 6:00 p.m. and must not be removed before Sunday at 7:00 p.m. Pre-registration is highly encouraged to help speed up the check-in process.

### Director in Charge

Susan Stram

### Department Head

Susan Stram

### Entry Fees

Adult Exhibitors - Exhibitor ticket or Membership pass

Youth Exhibitors - A one-time \$3 fee for unlimited entries in all departments.

### Premiums: Adults

1st - 5.00

2nd - \$3.00

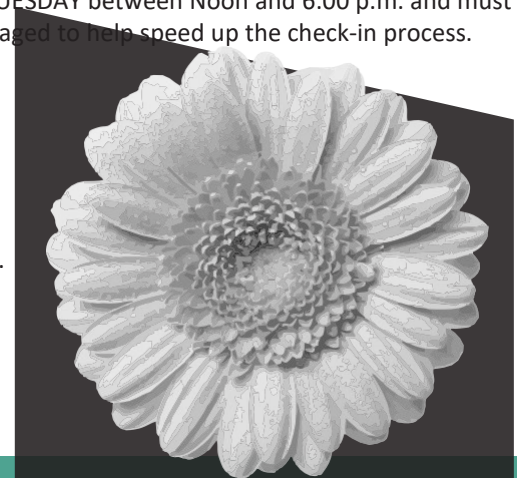
3rd - Ribbon

### Premiums: Youth

1st - \$3.00

2nd - \$1.00

3rd - Ribbon

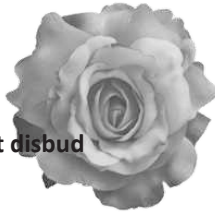


# Department 12 Flowers

## Section 1

### Hybrid Tea Roses; Named, One Bloom Class:

1. Any varieties



## Section 2

### Floribunda or Polyantha Roses; 1 stem; do not disbud Class:

1. Any varieties

## Section 3

### Miniature Roses: Class:

1. Any varieties



## Section 4

### Miniature Gladiolus Class:

1. Any varieties

## Section 5

### Large Gladiolus Class:

1. Any varieties



## Section 6

### Annuals Class: Best of show will be awarded in this Section

1. Aster; 3 bloom
2. Ageratum; 3 sprays
3. Calendula; 5 blooms
4. Bachelor button; 5 blooms
5. Celosia; crested; 3 blooms
6. Celosia; plumed; 3 blooms
7. Coleus; 3 stems foliage
8. Cosmos; 5 blooms
9. Dahlia; large flowered; 1 bloom
10. Dahlia; dwarf; 3 blooms
11. Marigold; large carnation; 3 blooms
12. Marigold; any other; 1 spray with foliage (do not disbud)
13. Pansy; 3 blooms
14. Petunia; 3 blooms
15. Portulaca; 3 blooms
16. Salvia; red; 3 blooms
17. Salvia; blue; 3 blooms
18. Snapdragon; tall; 3 spikes
19. Snapdragon; dwarf; 5 blooms
20. Verbena; 3 blooms
21. Vinca; 3 sprays with foliage (do not disbud)
22. Zinnia; large flowered; 3 blooms
23. Zinnia; dwarf or pom-pom; 3 blooms
24. Statice; 3 spikes
25. Strawflower; 5 blooms
26. Sunflower; 3 blooms
27. Any other



## Section 7

### Perennials Class Best of show will be awarded

1. Coreopsis; 3 blooms
2. Chrysanthemum; 1 spray
3. Gloriosa Daisy; 5 blooms
4. Dianthus; 3 blooms
5. German Statice; 3 spikes
6. Gaillardia; 5 spikes
7. Achilles (Yarrow); 3 blooms
8. Hollyhock (Alcea Rose); 3 spikes
9. Artemisia; 3 spikes
10. Daylilies; 3 blooms
11. Shasta Daisy; 3 blooms
12. Baby's Breath; 3 spikes
13. Phlox; 5 spikes
14. Butterfly Bush; 3 spikes
15. Echinacea; Purple Coneflower; 3 blooms
16. Balloon Flower; 3 spikes
17. Liatris; 3 spikes
18. Lily; 1 spray
19. Hydrangea; 3 stems
20. Delphinium
21. Rose of Sharon
22. Any other

## Department 12 Flowers Continued

### Section 8

#### Potted Plant Class:

One plant per pot.

1. African Violet; single/double bloom
2. Begonia; tuberous rooted
3. Begonia; feeverous rooted
4. Geranium; bedding
5. Impatiens; New Guinea
6. Impatiens; Standard
7. Any flowering plant not listed
8. Ferns
9. Vines; may be more than 1 plant
10. Cactus; 1 type of plant per pot
11. Any other

### Section 9

#### Specialty Pots Class:

Exhibits must have been planted a minimum of four weeks. List date of planting.

A terrarium must be a closed container.

1. Dish Garden; 3 or more varieties
2. Patio Pot; 3 or more varieties
3. Miniature Garden; all specimens and plants to be miniature
4. Unusual Container
5. Deck Planter
6. Any other

### Section 10

#### Hanging Baskets Class:

1. Flowering; most blooms
2. Flowering; largest blooms
3. Flowering; smallest blooms
4. Foliage; fullest
5. Foliage; longest
6. Foliage; most unusual
7. Any other

### Section 11

#### Arrangements Class:

(Amateurs only);

Special Contest; Create Your Own...

Bring to the Fair.

1. Flower arrangement using live flowers. Fillers will be allowed.
2. Flower arrangement using silk flowers. Fillers will be allowed.
3. Decorated hat (FALL) using silk flowers.
4. Decorated hat (WINTER) using silk flowers.
5. Decorated grapevine wreath (SPRING) using silk or artificial flowers.
6. Decorated grapevine wreath (SUMMER) using silk or artificial flowers.





# LUCAS COUNTY FAIR SENIOR FAIR ENTRY FORM

Only one exhibitor per form

NAME\_PHONE# \_\_\_\_\_

AGE (Only List if Under 18) \_\_\_\_\_

Pass# \_\_\_\_\_

STREET ADDRESS \_\_\_\_\_

CITY \_\_\_\_\_ STATE \_\_\_\_\_

ZIP\_E-MAIL \_\_\_\_\_

Department	Section	Class	Description of Entries
example: 5	3	4	Canned Goods, Jams, Strawberry

***If paying with a Credit Card - Please complete the following:***

Name as it appears on the card: \_\_\_\_\_

Billing Address: \_\_\_\_\_

\_\_\_\_\_

Card Number -----

Master Card \_\_\_\_\_ Visa \_\_\_\_\_

Expiration Date: \_\_\_\_/\_\_\_\_ CVC Code (on back of card): \_\_\_\_\_

Authorized Signature \_\_\_\_\_



## Department 15 Freestanding Scarecrow

### Rules:

1. Entry must be freestanding. Height of entry must not exceed 6' or be below 3'. Width must not exceed 6'.
2. Entry must consist of a single scarecrow with no multiple characters.
3. Materials used in scarecrow should be homemade.
4. Scarecrows may be loveable, mischievous, humorous or downright frightening!
5. Winners are not eligible again for two years with same exhibit.
6. Exhibits must be placed in the green building on Monday between Noon - 6:00p.m.
7. No more than two Entries allowed per exhibitor.

### Director in Charge

Susan Stram

### Department Head

Susan Stram

### Entry Fees

Adult Exhibitors - Exhibitor ticket or Membership pass

Youth Exhibitors - A one-time \$3 fee for unlimited entries in all departments.

### Premiums Adult/Children:

1st - \$25.00

2nd - \$10.00

3rd - Ribbon

### Section 1

#### Freestanding Scarecrow Class:

1. Adult

2. Youth 17 and under

### Youth group

*Pizza Party for  
the special  
contest group.*



## Department 16 Seasonal Decorations

Create an arrangement using silk and or dry material. Fresh flowers may also be used.

Arrangements shall be brought into the green Arts and Crafts Building on Monday between Noon - 6:00 p.m. and must not be removed before Sunday at 7:00 p.m.

### Director in Charge

Susan Stram

### Department Head

Susan Stram

### Premiums: Adults

1st - \$5.00

2nd - \$3.00

3rd - Ribbon

### Premiums: Youth

1st - \$3.00

2nd - \$1.00

3rd - Ribbon

### Section 1

#### Seasonal Arrangement; Adult Class:

1. Wreat

h 2. Hat

3. Wall hanging

4. Centerpiece or arrangement

5. Any other

### Section 2

#### Seasonal Arrangement; Youth (17 and under) Class:

1. Wreath

2. Hat

3. Wall hanging

4. Centerpiece or arrangement

5. Any other

1

# Department 19 Woodworking

## Section 4

### Woodworking; ADULT Class:

16. Any varieties

## Section 5

### Woodworking; YOUTH (17 under) Class:

16. Any varieties



## Department 20 Homemade Beer & Wine

### Rules for Homemade Beer

Entry Deadline:

Entries will be accepted on Monday (10 a.m. – 6 p.m.) All entries must be received NO LATER THAN 6 p.m. on MONDAY . Judging will occur on Tuesday Evening.

### Entry Fees:

Exhibitor or Membership ticket. Rules: Contestants must submit up to two (2) entries per category (One for display, one for judging). Entries must be in plain, unmarked 12 oz bottles.

### Director in Charge

Susan Stram

### Department Head

Susan Stram

### • Premiums:

- 1st - \$10.00
- 2nd - \$7.00
- 3rd - \$5.00



### Rules for Homemade Wine

Entry Deadline: Entries will be accepted on Monday (10 a.m. – 6 p.m.) All entries must be received NO LATER THAN 6 p.m. on Monday . Judging will occur on Tuesday Evening.

### Entry Fees:

Exhibitor or Membership ticket. Rules: Contestants may submit up to two (2) entries per category. Entries must be in plain, unmarked 750 ml bottles. (Must have 2 bottles per entry).

### Director in Charge

Susan Stram

### Department Head

Susan Stram

### Premiums:

- 1st - \$10.00
- 2nd - \$7.00
- 3rd - \$5.00





## Department 20 Homemade Beer & Wine

### Section 1

#### Homemade Beer and Ale Classes

##### Pale Lagers

Included Styles: Light American Lager, Standard American Lager, Premium American Lager, Munich Helles, Dortmunder Export, German Pilsner, Bohemian Pilsner, Classic American Pilsner, Maibock/Helles bock.

##### Amber & Dark Lagers

Included Styles: Vienna Lager, Oktoberfest/Mitzen, Dark American Lager, Munich Dunkel, Schwarzbier, Traditional Bock, Doppelbock, Eisbock.

##### Hybrid Beers

Included Styles: Cream Ale, Blonde Ale, Kolach, American Wheat or Rye, North German Altbier, Dutseldorf Altbier, California Common.

##### American Ales

Included Styles: American Pale Ale, American Amber Ale, American Brown Ale, American IPA.

##### English Ales

Included Styles: Standard/Ordinary Bitters, Special/Best/Premium Bitter, Extra Special/Strong Bitter (English Pale Ale), English IPA, Southern English Brown Ale, Northern English Brown Ale.

##### Scottish & Irish Ales

Included Styles: Scotti sh Light 60%, Scotti sh Heavy 70%, Scotti sh Export 80%, Scotti sh Ale, Irish Red Ale.

##### Belgian & French Ales

Included Styles: Witbier, Saiton, Belgian Blonde, Dubbel, Tripel, Golden Strong, Dark Strong, Biere de Garde, Belgian Specialty, Flanders Red and Brown, all Lambics, Sour Ales.

##### German Wheat and Rye Ales

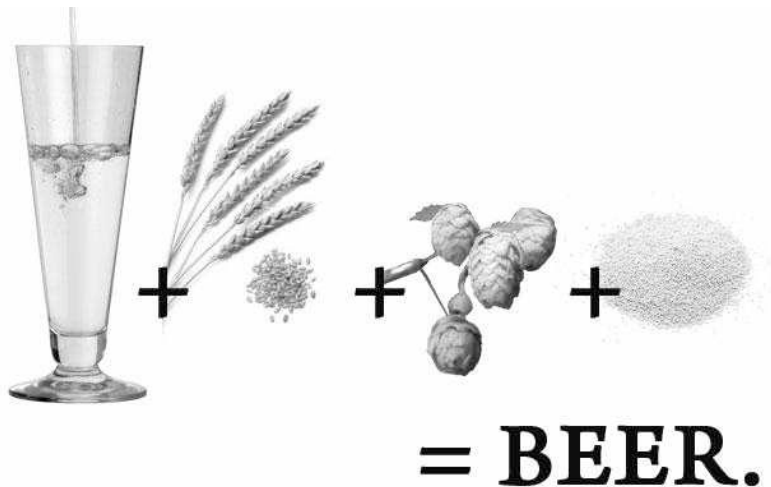
Included Styles: Weizen/Weissbier, Dunkelweizen, Weizenbock, Berliner Weisse, Roggenbier.

##### Porters & Stouts

Included Styles: Brown Porter, Robust Porter, Baltic Porter, Dry Stout, Sweet Stout, Oatmeal Stout, Foreign Extra Stout, Imperial Stout.

##### Specialty and Experimental Beers

Styles Include but not limited to: Olde Ale, English Barleywine, American Barleywine, Spice/Herb/Vegetable Beers, Christmas/Spiced/Winter Specialty Beers, Smoke-flavored and Wood Aged Beers, Fruit Beers.



## Department 20 Homemade Beer & Wine

### Section 2 Wine Classes

**White Grape, Dry Dry** wines made from white grapes, grape juice or concentrates.

**Red Grape, Dry Dry** wines made from red grapes, grape juice or concentrates.

**Berry and Fruit Wine, Dry Dry** wines made from berries, fruits, juice or concentrates.

**Sparkling Wine** Sparkling wines made from any of the above categories. Entry form must indicate “dry sparkling” or “sweet sparkling.” Wine must be in a champagne bottle with wired enclosure and chilled.

**Rosé/Blush Wines** may be made from grapes, fruits, berries, juices, concentrates or a blend of ingredients and can be dry or sweet. Qualifying attribute of this class is color.

**Specialty and Novelty Wine** Wines made from ingredients including vegetables, grains, seeds, flowers, spices, leaves, barks, roots, sap, honey (meads), etc. Main ingredient must be listed on entry form. May be dry or sweet.

**White Grape, Sweet Sweet** wines made from white grapes, grape juice or concentrates. **CLASS #8 –**

**Red Grape, Sweet Sweet** wines made from red grapes, grape juice or concentrates.

**Berry and Fruit Wine, Sweet Sweet** wines made from fruits, berries, juices, concentrates or a blend of ingredients.

**Dessert/Aperitif Still wines** of 14% abv. or greater made from any of the categories above. Each entry will be judged according to the entrant's description of style (eg. Ice Wine; Ruby Port; Dry Vermouth; etc.). Wines may be fortified with commercially produced spirits if appropriate to style



